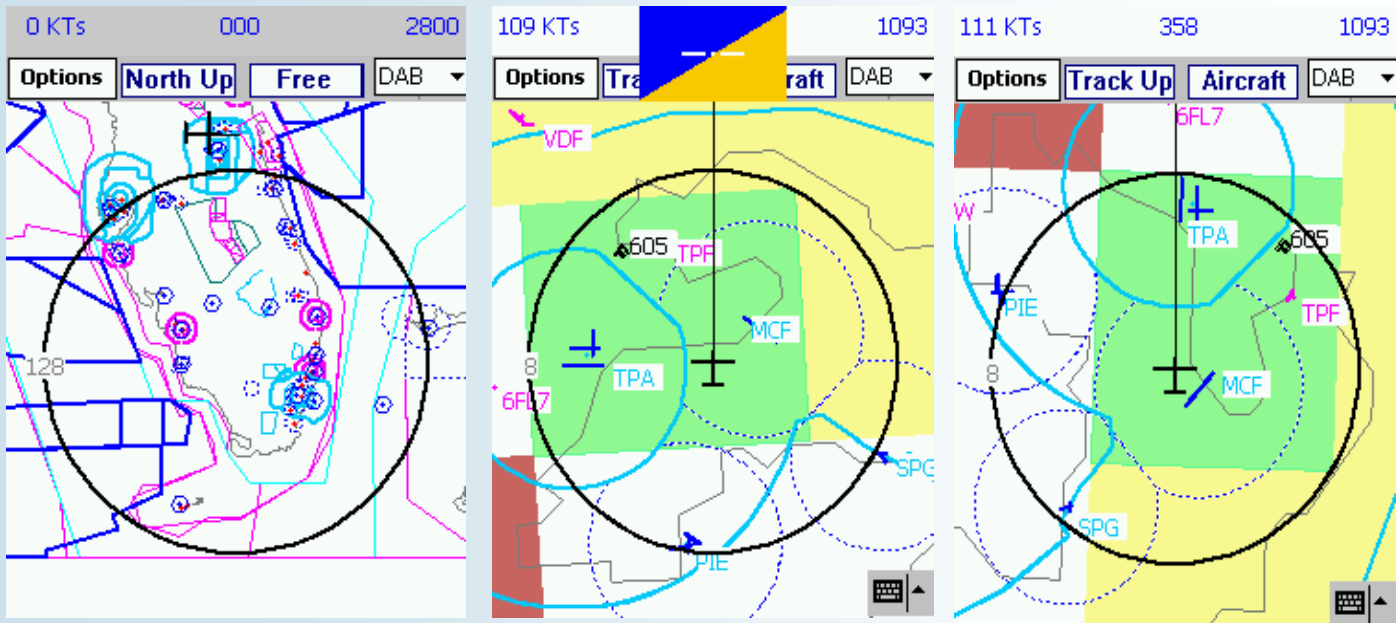


EMAP by PCFLIGHTSYSTEMS



THE SMART PocketPC ELECTRONIC MAP WITH WX



FEATURES

WEATHER DEPICTION

OBSTACLE/TERRAIN ALERTS

AIRPORTS (about 15,000 airports including small private ones to the largest commercial ones)

TERMINAL AREA AIRSPACE (Class B, C, D, and E airspace)

SPECIAL USE AIRSPACE

NAVIGATIONAL AIDS

STATE BOUNDARIES

MAJOR RIVERS AND LAKES

TERRAIN FOR ENTIRE US

EXTENSIVE DATABASE CAPABILITIES—Frequencies, airport info, and much more

RUNS SIMULTANEOUSLY WITH PCEFIS—simultaneous AI DISPLAY

INTRODUCTORY OFFER—*ONLY \$150 WITH ONE YEAR OF FREE UPDATES*

EMAP, the new “smart” moving map software from PCFLIGHTSYSTEMS. **EMAP** is a state-of-the-art program that renders a computerized chart from an extensive set of databases, based upon the flight path of the aircraft. This chart is computed and rendered on PocketPC compatible Personal Digital Assistants (PDA’s) such as the iPAQ® series from Compaq Computer Corporation. The software is intended to provide the Visual Flight Rules (VFR) pilot with the utmost in situational awareness. **EMAP** provides the situational awareness with an absolute minimum of pilot inputs allowing him or her more heads-up time to dedicate to other workload tasks, watching out for other air traffic and enjoying the flight. The system is specifically designed to be simple, easy and intuitive to use. The primary goal of **EMAP** is to automatically provide the essential situational information required for safe VFR flight. The design of **EMAP** was focused on providing a simple map interface, which does not distract the pilot with unnecessary features and options. Emap provides the following elements of situational awareness:

- 1) WX depiction (requires use of optional weather receiver hardware/service)
- 2) Simultaneous attitude display with PCEFIS attitude indicator system
- 3) Obstacles
- 4) State boundaries
- 5) Major rivers and lakes
- 6) Airports (about 15,000 airports including small private ones to the largest commercial ones)
- 7) Navigational aids
- 8) Obstacles
- 9) Special Use airspace (Restricted, Warning, Alert, Military Operations Areas (MOA), Alert and Prohibited areas)
- 10) Terminal area airspace (Class B, C, D, and E airspace)
- 11) Flight plan
- 12) Terrain for the whole USA
- 13) Flight Service Stations (FSS) frequencies
- 14) Air Route Communication Centers (ARTCC) frequencies
- 15) Airport information including frequencies, runway information, fuel availability, airport notes, phone numbers, lighting, runway markings etc.
- 16) Aircraft altitude, ground speed, and ground track display
- 17) Terrain elevation profile and much, much more.

EMAP intelligently decides what features to display to best utilize the small PDA display. The display algorithm automatically determines the best way to display map features to provide data in an uncluttered format. The intent of EMAP is to always provide pertinent data in a concise, color coded format, without requiring pilot interaction. EMAP is designed to reduce the workload of the pilot.

Available from PCFLIGHTSYSTEMS

ORDER ONLINE AT WWW.PCFLIGHTSYSTEMS.COM

A division of:

Sellers Aviation, Inc.

9625 SE 70th Terrace

Ocala, FL. 34472

Phone: 352-347-1700

Email: info@pcflightsystems.com